

## 5 REPAIR

### 5.1 Disassembly / Reassembly

#### 5.1.1 Top panel (worktop)

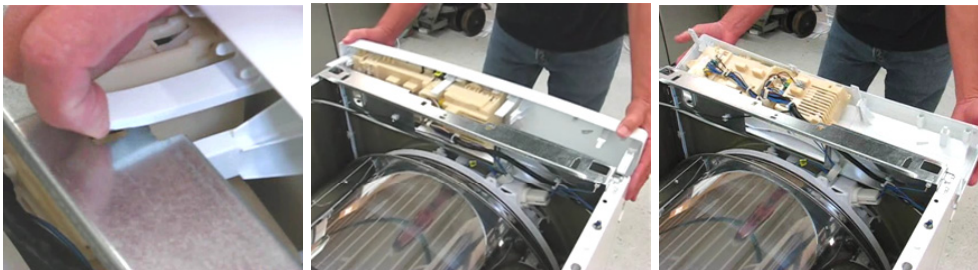
Remove two T-20 Torx screws (with washers) from top rear corners of dryer, slide panel toward rear of dryer (~ ½ cm) and lift up panel. When reassembling, slide panel forward and replace two screws.



#### 5.1.2 Fascia (control) panel

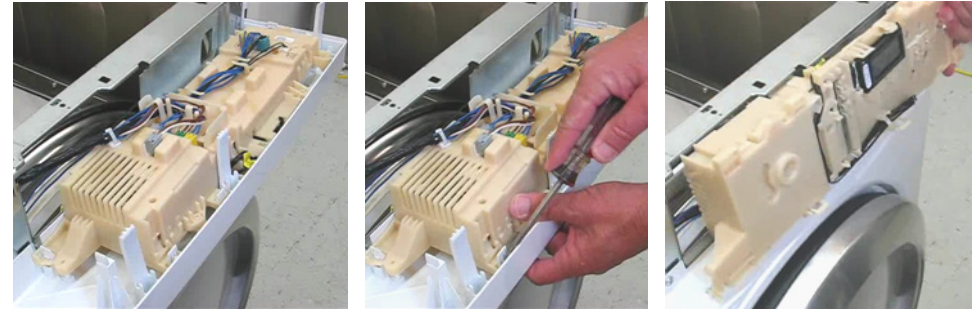
Panels are held in place by plastic latches – no screws need to be removed.

Remove top panel (5.1.1), then gently pry up top plastic latches. When top latches are released, gently pull the panel straight out until the bottom tabs release. Don't tilt the panel to avoid breaking the bottom tabs.



#### 5.1.3 Control module

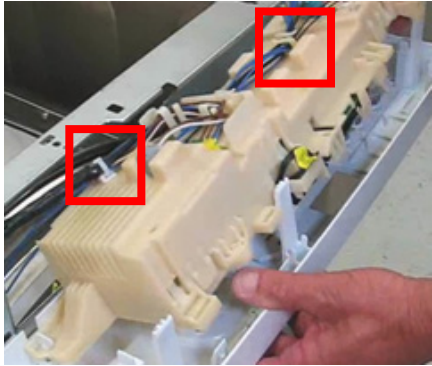
Remove control module from fascia panel progressively from left to right, carefully releasing all plastic latches (so latches don't break). Gently pry up left side of control so latches don't re-close. Control will release from fascia panel and knob.



There are other latches, joining the control module housing together, which don't need to be released to remove the control module.

Don't remove the knob to remove the control module. The control lifts off completely from the panel, knob & buttons.

Don't force controls out from fascia panels to avoid breaking plastic parts. If modules don't come out easily, the procedure hasn't been followed and plastic parts will break.



Don't cut cable mounts – cut cable ties holding cables to mounts. When reassembling, use new cable ties.

Some controls have been wrongly replaced since fault codes stored in washer or motor controls can't be cleared. Controls are operating properly and shouldn't be replaced to clear fault codes.

**⚠ CAUTION** – **75%** of all controls returned for analysis check out OK. Most control issues are due to loose connections.

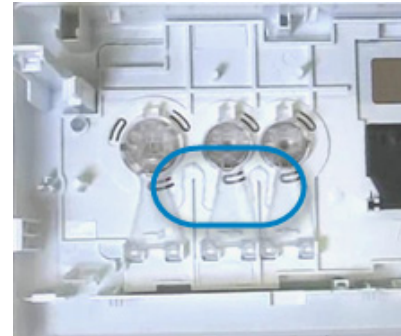
#### 5.1.4 Button caps (round / rectangular)

All button caps don't snap onto buttons, but fit loosely – held in place by the control after reassembly. When reassembling fascia (control) panels, set panels face down so button caps don't fall out.



#### 5.1.5 Round button assembly

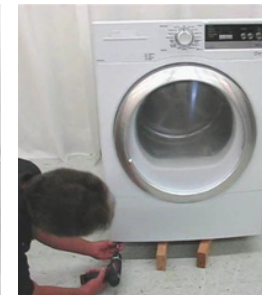
The (clear) round button assembly is connected by delicate plastic rods. When removing buttons, gently pry out and remove them as a group, not individually.



#### 5.1.6 Bottom front panel ("toe kick")

Removing the bottom front panel provides access to the maintenance cover and is necessary for removing the front panel.

Carefully lift and block (up) front of dryer (to provide access to screws). Remove three (3) screws, then carefully slide panel down and away from dryer.



### 5.1.7 Door removal

To remove the door from the front panel, open the door, remove four (4) M4.2x19 T-20 Torx hinge cover screws, remove the hinge cover and lift the door up and away from the panel.



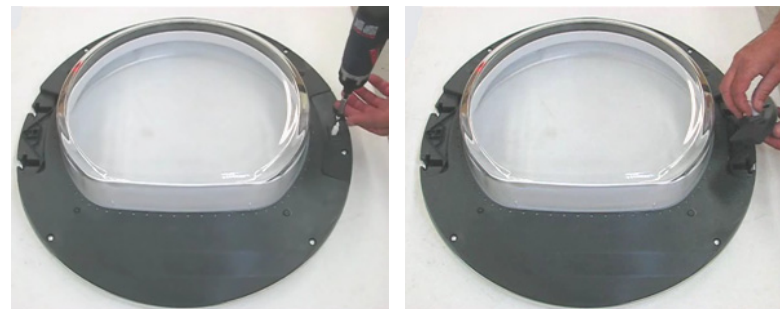
### 5.1.8 Door disassembly

The door isn't available as a complete assembly, but is easily disassembled and reassembled. It's assembled using screws – no plastic latches are used.



Turn the door inside-out (i.e. with inner door glass facing up).

Remove two (2) M4.2x19 T-20 Torx latch cover screws and remove the latch cover and latch out from the door.



Once latch has been removed, remove the remaining four (4) M4.2x19 and five (5) countersunk T-20 Torx screws from the inner door frame. Lift the inner frame from the door.



The door glass bowl is shown here in the standard hinge right position. Note the door glass and inner ring positions before removing them as they change depending on the hinge position (right or left).

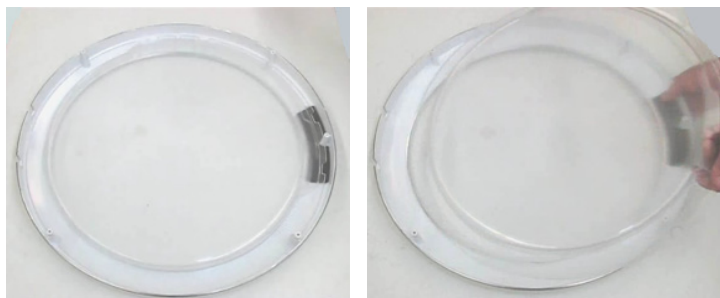




Lift the door glass and the inner ring from the door.



Lift the outer door glass cover from the outer door frame.

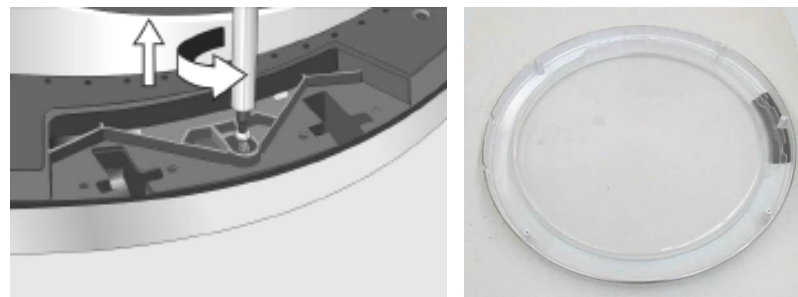


### 5.1.9 Reversing door hinge

The door hinge can easily be reversed from factory right hinge to left hinge position without any parts or kit. Complete instructions are available separately – a shortened summary of those instructions are copied here.



- 1) Remove door (5.1.7) and place it (front side down) on a protected surface to avoid scratching the outer door frame and door glass. Make sure hinge plastic bushings remain on the hinge.
- 2) Disassemble door (5.1.8) until only outer door frame and outer door glass cover remain, including removing single screws under the hinge and latch covers.



- 3) Rotate outer door frame and outer door glass cover 180°. All parts will be reassembled in the same position and order they were disassembled – when reassembly is completed, the hinge will be rotated 180°.



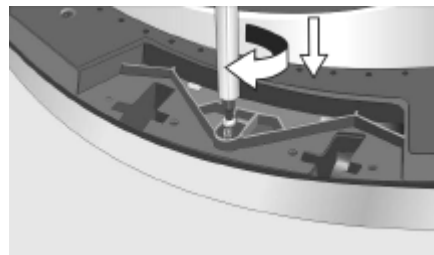
- 4) Lift up the outer door glass and rotate it 90° clockwise. Don't rotate the outer door frame.



- 5) Reassemble all parts in the same position and order they were disassembled (inner ring, glass bowl, inner frame) – when reassembly is completed, the hinge will be rotated 180°.



Be sure to reinstall the single screws under the latch and hinge cover plates.



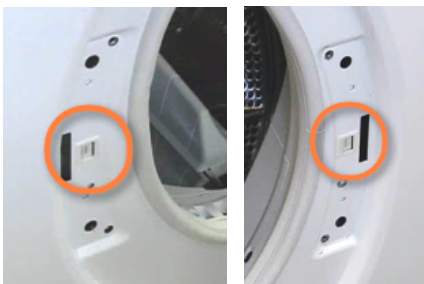
- 6) Move latch (to left side) and reassemble door latch cover.



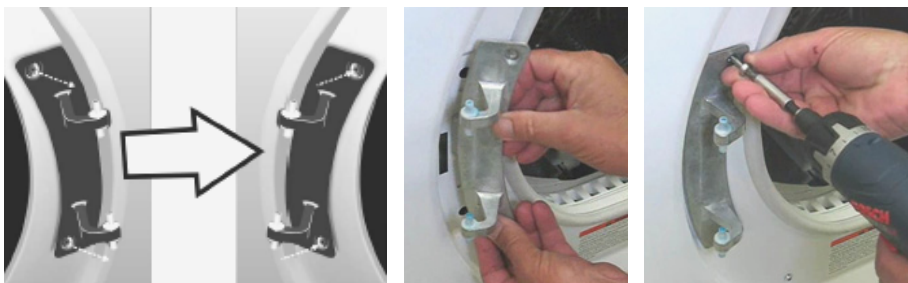
- 7) Remove (left side) front panel latch cover by removing two (2) screws.



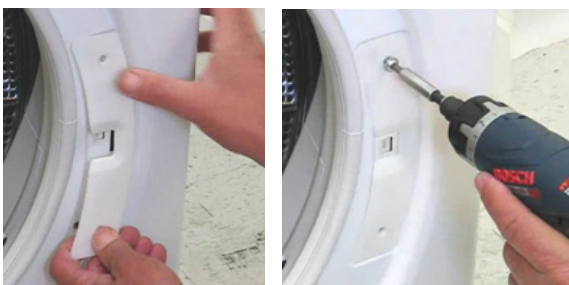
There is a retainer latch (“catch”) in both the left and right sides so there’s no need to move them.



- 8) Remove hinge from right side of dryer by removing two (2) screws and lifting the hinge up and away from the dryer. Move hinge to left side of dryer and attach with two (2) screws. Make sure plastic hinge bushings don’t fall off.



- 9) Reinstall front panel latch cover on the right side of the dryer with (2) screws.

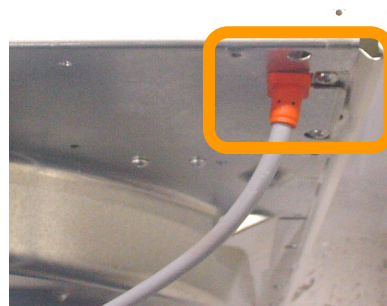


- 10) Place door onto hinge and reinstall door hinge cover with four (4) screws to secure door to dryer.



#### 5.1.10 Rear panel

Remove top panel (5.1.1) for better access to parts. Remove two T-10 Torx screws holding rear panel to rear exhaust vent. Remove T-20 Torx screws holding rear panel to frame and to power connection sheet. Lift panel out.



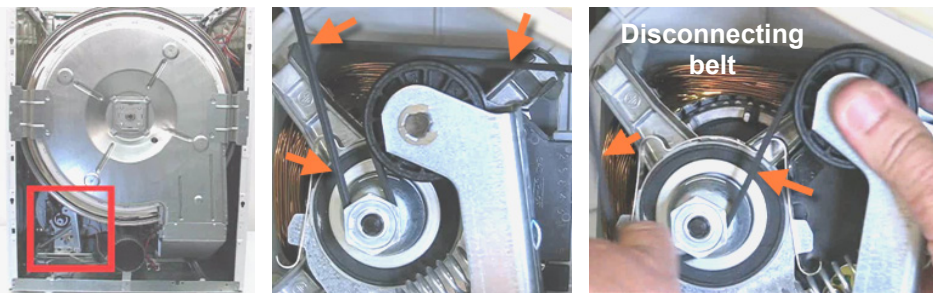
Two power connection sheet screws.

**Rear panel access is best for most repairs.**

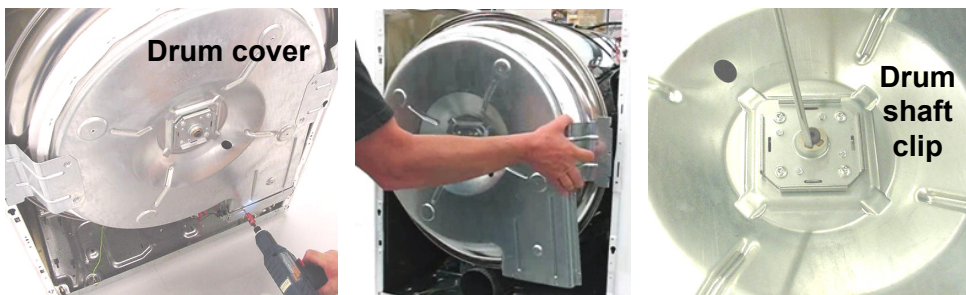


### 5.1.11 Drum and drum cover (with drum bearing)

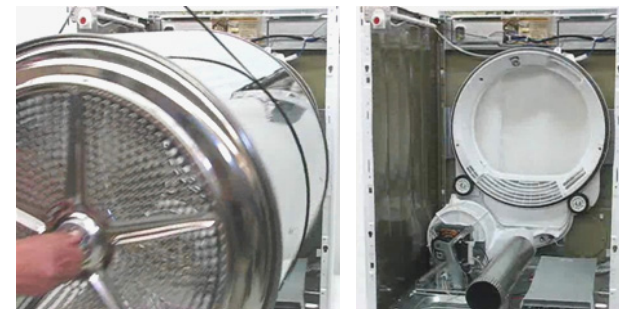
- 1) Remove rear panel (5.1.10).
- 2) Disconnect belt (from motor pulley) to remove belt tension.



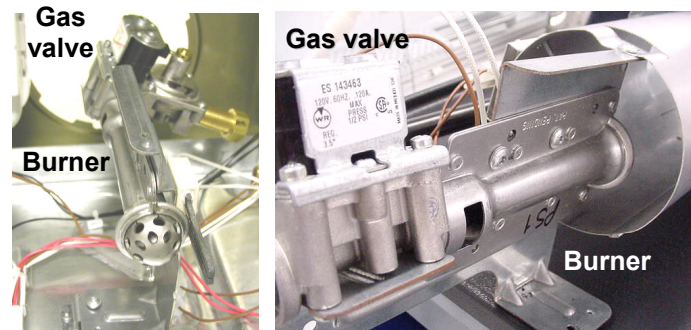
- 3) Remove dryer shaft clip and two T-20 Torx drum cover screws, then lift cover from dryer. Drum cover holds drum rear bearing, so drum isn't supported once drum cover has been removed.
- 4) If necessary, drum sleeve bearing can be removed from drum cover by removing four T-20 Torx screws.



- 5) Pull drum backward (toward you) to clear front drum support wheels, then lift drum from dryer.



### 5.1.12 Gas valve and burner



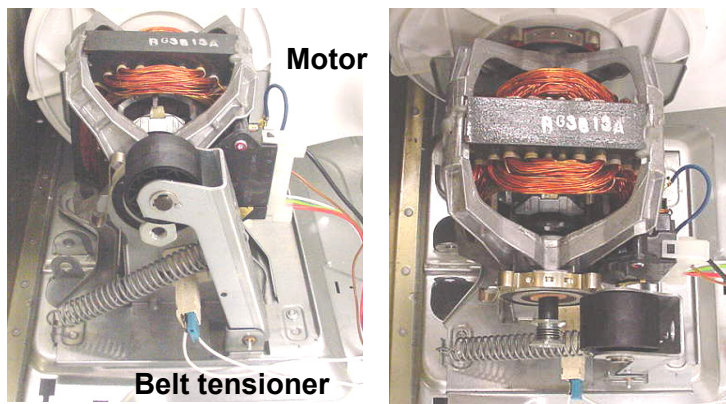
The gas valve and burner are attached as an assembly, so the same instruction applies.

- 1) Turn off gas supply & unplug power cord.
- 2) Remove rear panel (5.1.10) and drum cover (5.1.11).
- 3) If needed for better access, remove drum.
- 4) Disconnect gas pipe & 90° elbow fitting from gas valve using a 1" open-end wrench.
- 5) After noting connections, disconnect wires to all parts, including gas valve, igniter, flame sensor, Hi-limit & NTC. Be careful to not damage igniter.

- 6) Remove burner screws, including screws holding burner bracket to base and combustion chamber and screws holding burner to bracket.

### 5.1.13 Motor, belt tensioner and broken belt switch

All three are mounted on motor cradle, located behind air duct (viewing rear of dryer), and can be accessed from front or rear of dryer. Motor must be disconnected from fan (5.1.17) and belt from motor pulley before motor can be removed. Once disconnected, motor cradle with motor, belt tensioner and broken belt switch can be unscrewed and slid out from dryer. To remove motor from cradle, remove two spring clips and lift up from cradle.



### 5.1.14 Front panel

- 1) Remove fascia panel (5.1.2). If necessary for access, remove top panel (5.1.1).
- 2) Remove door (5.1.7) and door hinge (5.1.9.8).
- 3) Remove lint screen and door seal.
- 4) Remove toe kick panel (5.1.6).
- 5) Remove T-20 Torx screws from top / bottom of panel and around door, then lift panel up (from four plastic mounting tabs).



- 6) Remove door switch from panel by disconnecting wire harness, squeezing two tabs on switch and pushing switch through front of panel.



- 7) To remove belt tension (so drum doesn't shift when front bearing shield is removed), remove rear panel (5.1.10) and disconnect belt (from motor pulley).