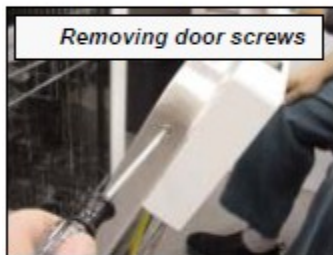


Control modules are easily removed from fascia panels by bending console tabs.

(SHU 9922 shown)

- Remove fascia panel by removing T-20 Torx inner door screws.
- Disconnect wire harnesses from module after noting connector locations.
- Pry out metal console tabs holding module to console.
- Carefully pry back plastic tabs, then slide module from console.



Removing door screws



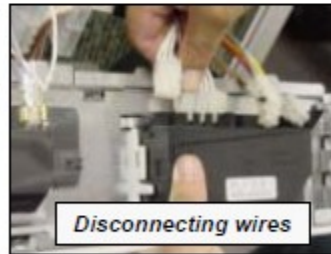
Removing fascia panel



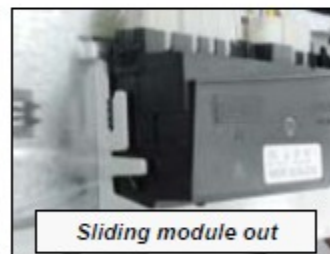
Viewing control module



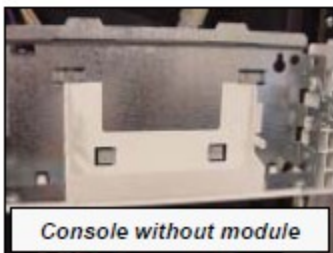
Bending back tabs



Disconnecting wires



Sliding module out



Console without module

NOTE: Control modules for non-integrated models look differently and have different tabs, but are removed using the same procedure.

SHY56A/66C, SHU 995x & SHV 68 control modules are different than other models and are removed differently.

- Remove fascia panel by removing six (6) T-20 Torx inner door screws.
- Disconnect wire harnesses from module after noting connector locations.
- Remove fascia panel from console by removing four (4) T-20 Torx screws.
- Remove two (2) T-20 Torx screws holding module to console.
- Carefully pry back locking tabs on each front corner of module, then remove module from console. Remove button pad from module.

(SHU 995x shown)



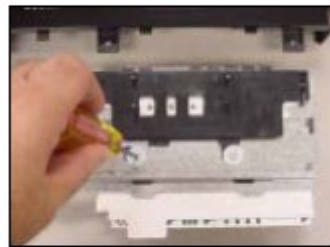
These instructions apply to SHY56A/66C, SHU 995x & SHV 68 models.



Removing door screws



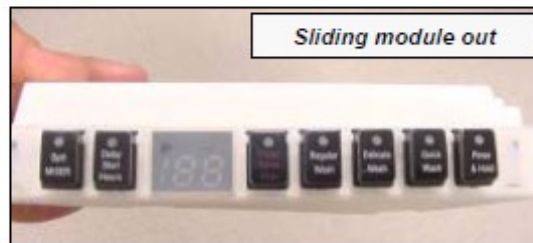
Removing fascia screws



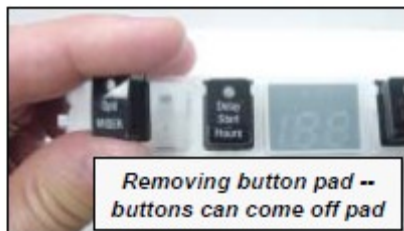
Removing module screws



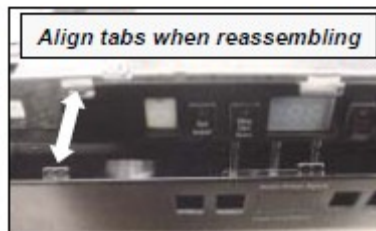
Prying back module tabs



Sliding module out



Removing button pad -- buttons can come off pad



Align tabs when reassembling

Control Modules - SHY56A/66C Control Modules with Displays

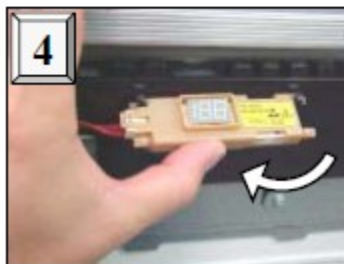
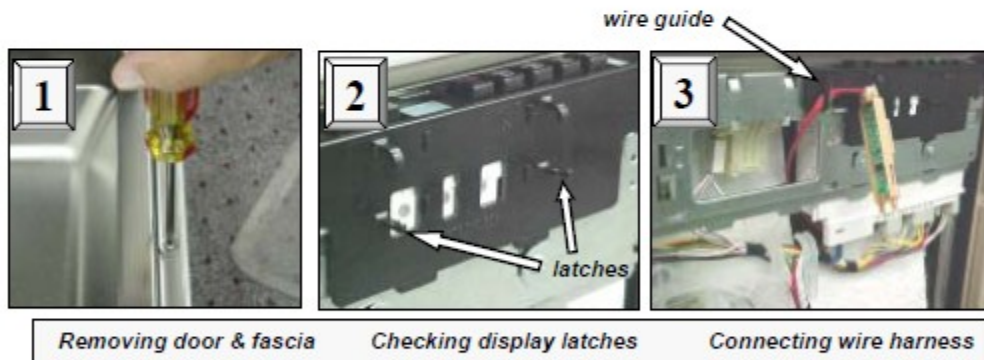
SHY56A/66C control modules have separate display modules mounted on the front of fascia panels.



These instructions apply to SHY56A & SHY66C models.

To remove/install display module:

- Remove outer door & fascia panel.
- Confirm the (4) pushbutton carrier display latches are intact.
- Route display wire harness through (door latch) console opening, press harness onto pushbutton carrier wire guide & connect terminal.
- Insert display into top latches (on pushbutton carrier), then push bottom of display up and rotate it into bottom latches.



Locking display in place