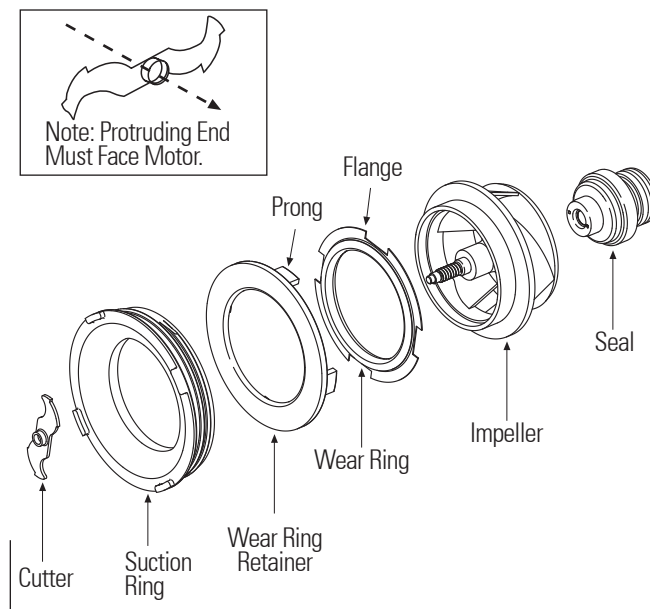


WD19X10038 Service Kit INSTALLATION INSTRUCTIONS

1. Hold motor shaft, remove old cutter.
2. Remove the suction ring by rotating clockwise (has a left hand thread) and discard.
3. Remove the wear ring retainer and the wear ring. Discard both parts.
4. Hold motor shaft and remove the old impeller by turning counterclockwise and discard.
5. Separate motor from pump by removing 4 screws as shown below. (Figure 1)
6. Remove the protective sleeve from the motor shaft if present and discard.
7. Press seal out of the pump housing from motor side and discard.
8. Install new seal assembly by pressing seal firmly in pump housing seal pocket. Make sure the seal is completely seated in the pump housing pocket.
9. Install the motor to the pump with 4 screws and torque to 20 to 30 in-lbs.
10. Install new impeller by holding motor shaft while pushing the impeller against the seal rotating impeller clockwise. Torque to 5 to 10 in-lbs.
11. Install the new wear ring with flange facing the motor. Place wear ring retainer onto the wear ring with prongs fitting through the wear ring cutouts.
12. Install new suction ring and tighten by turning counter clockwise. Torque to 50 to 70 in-lbs.
13. Install new cutter by holding the motor shaft and turning the cutter clockwise with protruded opening side towards the motor and torque 5 to 10 in-lbs.

The new cutter must be installed with the protruded opening side towards motor.



WD19X10038 Kit
Contents and Assembly

