

PART NO. 8051291

NOTE: This sheet contains important Technical Service Data

**FOR SERVICE TECHNICIAN ONLY
DO NOT REMOVE OR DESTROY**

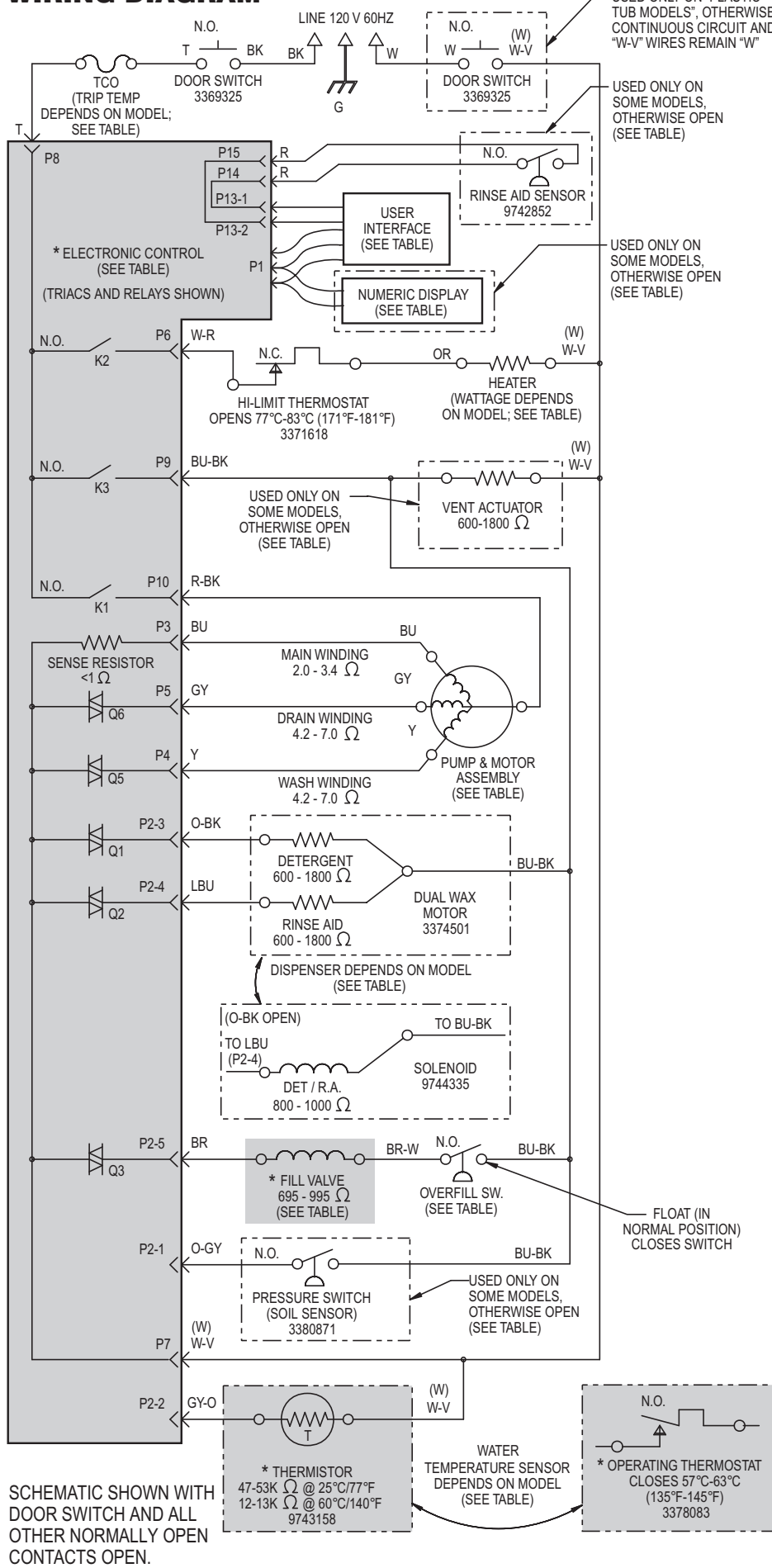
WARNING

Electrical Shock Hazard
Disconnect power before servicing.
Replace all panels before operating.
Failure to do so can result in death or electrical shock.

**Electrostatic Discharge (ESD)
Sensitive Electronics**

ESD problems are present everywhere. ESD may damage or weaken the electronic board. The new board may appear to work well after repair is finished, but failure may occur at a later date due to ESD stress.

- Use an anti-static wrist strap. Connect wrist strap to green ground connection point or unpainted metal in the appliance
- OR
- Touch your finger repeatedly to a green ground connection point or unpainted metal in the appliance.
- Before removing the part from its package, touch the anti-static bag to a green ground connection point or unpainted metal in the appliance.
- Avoid touching electronic parts or terminal contacts; handle electronic board by edges only.
- When repackaging failed electronic board in anti-static bag, observe above instructions.

WIRING DIAGRAM**SPECIFICATIONS**

Electrical Supply:
(Under load) 60 Hz, 120 VAC.

Supply Water Flow Rate:
To fill 1.9 liters (2 quarts) in 27 seconds, 120 PSI maximum, 20 PSI minimum.

Supply Water Temperature:
49°-71° C (120° to 160° F)
(Before starting a cycle, run water from sink faucet until hot.)

Water Charge:
8.3 liters (2.2 gallons) / fill approx.

Lower Spray Arm Rotation: 25 to 40 rpm.
Upper Spray Arm Rotation: 18 to 30 rpm.

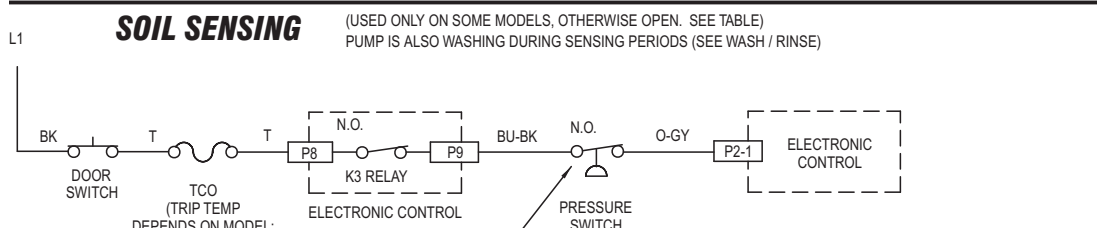
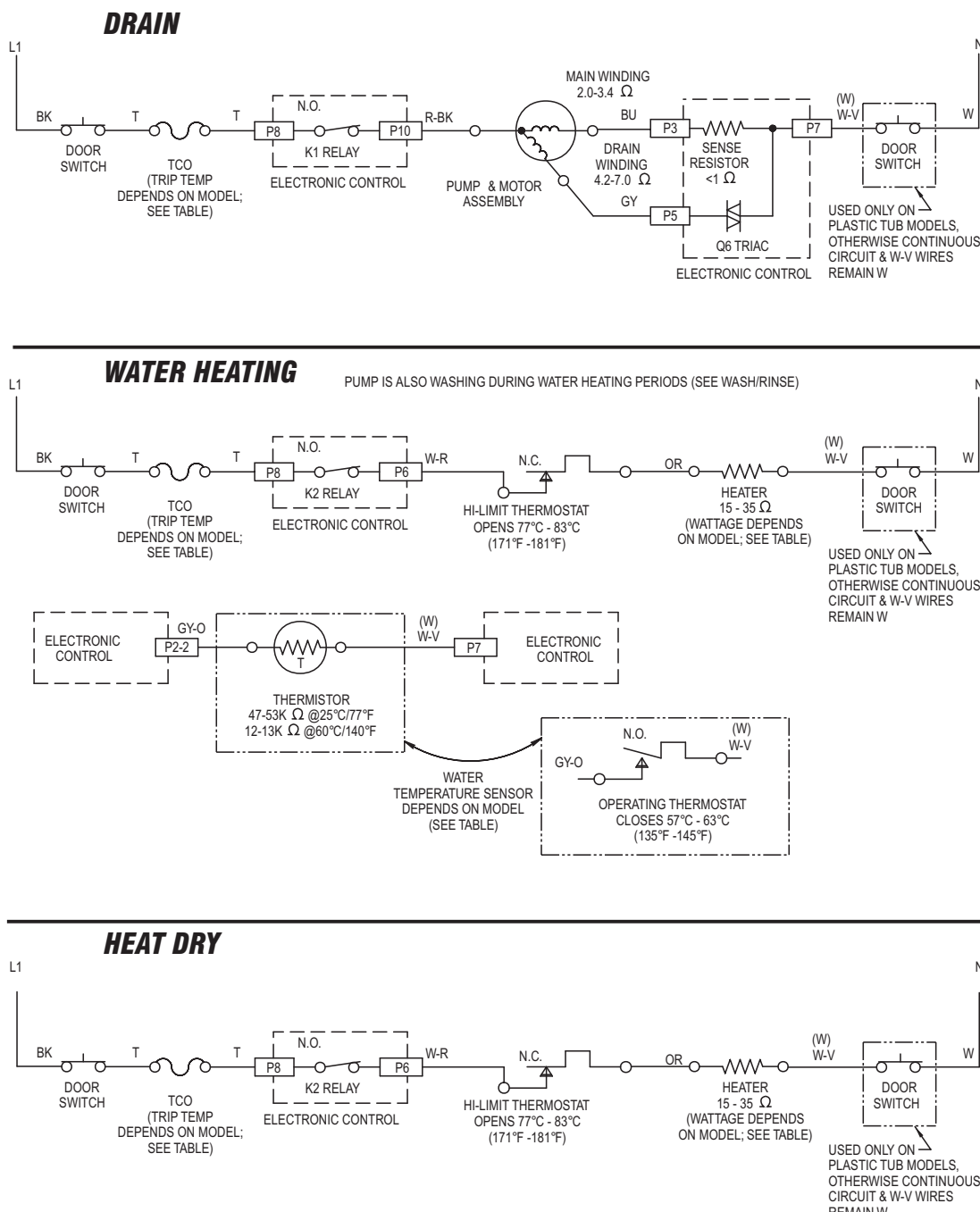
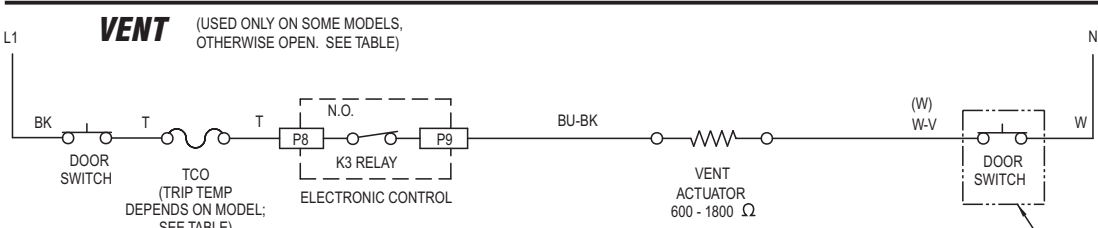
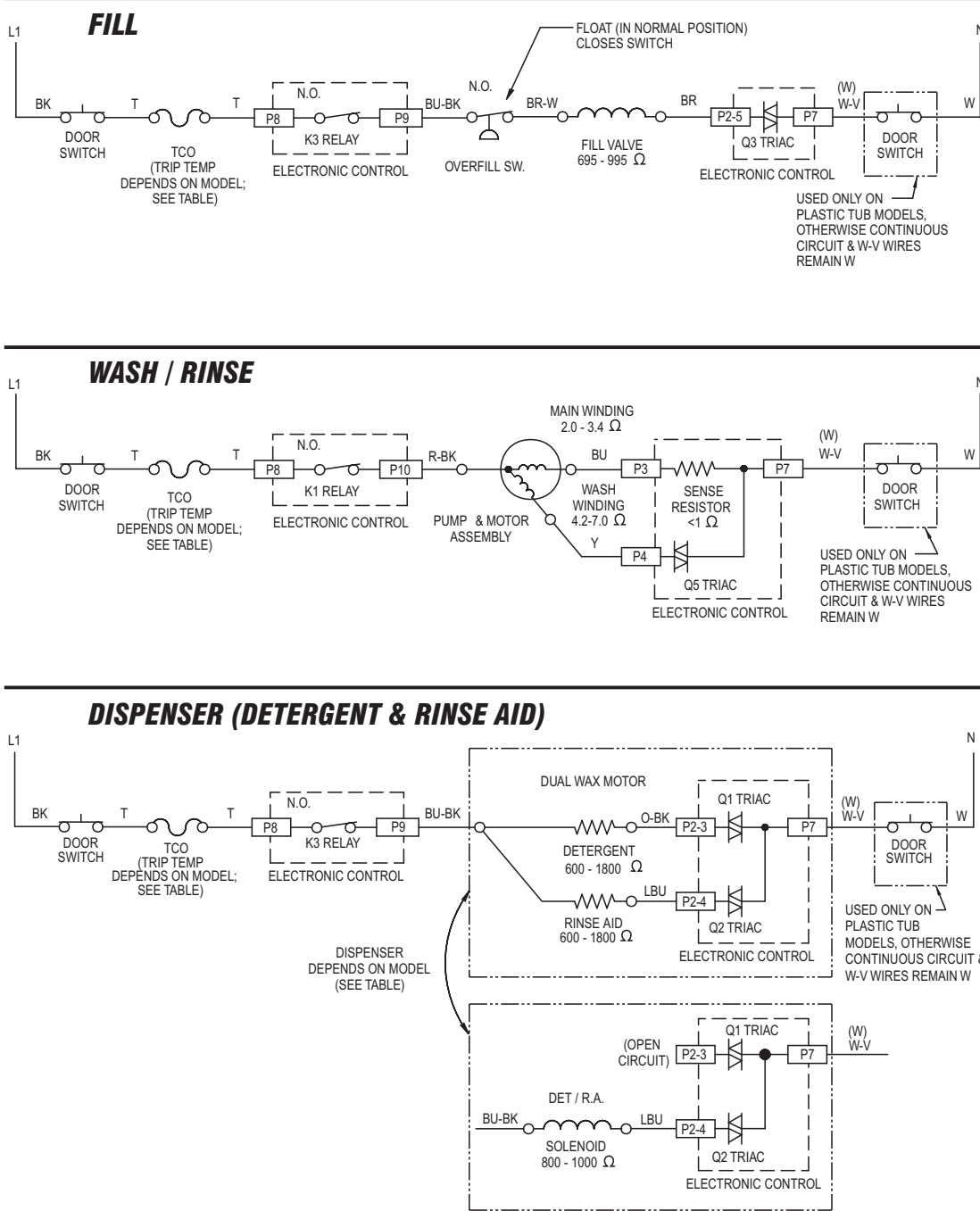
REPAIR KITS

- Vinyl Rack Patch Kit No. 676453
- Tine Tip Kit No. 675679

PIN NUMBER	DESCRIPTION	WIRE COLOR
P1	Ribbon Cable To User Interface	—
P2-1	Pressure Switch (Soil Sense)	O-GY
P2-2	Thermistor/Thermostat	GY-O
P2-3	Detergent Dispenser	O-BK
P2-4	Rinse Aid Dispenser	LBU
P2-5	Fill Valve	BR
P3	Motor Main Winding	BU
P4	Motor Aux Winding - Wash	Y
P5	Motor Aux Winding - Drain	GY
P6	Switched L1 to Heater	W-R
P7	AC Neutral	W-V
P8	L1	T
P9	Switched L1 to Vent, Fill Valve, Dual Dispenser, & Pressure Switch	BU-BK
P10	Switched L1 to Motor Common	R-BK
P13	Ribbon Cable to User Interface for Optional Rinse Aid Empty Light	—
P14	Optional Rinse Aid Sensor	RED

DISHWASHER CIRCUITS

The following individual circuits are for use in diagnosis. **Before starting diagnosis, check the line voltage and check for blown fuses.**



MODEL SPECIFIC ELECTRICAL COMPONENTS KEY													
MODEL NUMBER	* ELECTRONIC CONTROL	TCO	WIRING HARNESS	RINSE AID HARNESS	RINSE AID SENSOR	USER INTERFACE	NUMERIC DISPLAY	HEATER	VENT ACTUATOR	PUMP & MOTOR ASSEMBLY	DISPENSER	OVERFILL SWITCH	* FILL VALVE
1x72x			8271433			3383824				8051314			
1x77x													
1x81x	9744031 or 9744483	3376359 (98°C/208°F)	3383914	N/A	N/A	3384164	N/A	3379486 (800/500w PTC, 15-30Ω)	N/A	8051310	3374501 (Dual Wax)	3369067	8283345
1x86x						3384165	3383825						
1x96x			3383915			3384096				8051311			3380871
1x97x	9744483	9743451 (110°C/230°F)	9744027	9743154	9742852	9744492	N/A	9743159 (670/435w PTC, 18-35Ω)	3379372		9744335 (Solenoid)	8282619	9744468
1x98x	9744031 or 9744483					9744224	3383825						
DP920			8271434			8051124				8051313			8274220
DU920						8051460							
SUD6000						8051124							
DU925, IJU586, DU931, DU1000	9744031 or 9744483	3376359 (98°C/208°F)	8271433	N/A	N/A	8051124	N/A	3379486 (800/500w PTC, 15-30Ω)	N/A	8051314	3374501 (Dual Wax)	3369067	8283345
DU929						8051160				8051313			
GU960, GU940, IJU588						8051127				8051312			
GU980			3383914			8051133							
GU990			3383915						3379372	8051311			8283346
KUDG25, KUDJ25						8299993							
KUDJ25, KUDJ25				N/A	N/A	9744190				8051314			
KUDM25						8299992							
KUDR25, KUDY25, KUDJ25	9744031 or 9744483	9743451 (110°C/230°F)	9744027			9743994	N/A	9743159 (670/435w PTC, 18-35Ω)	3379372		9744335 (Solenoid)	8282619	9744468
KUDS25						9743995							
KUDC25 (BK, WH, BT)				9743154	9742852	9743996				8051311			
KUDC25 (SS)						9743997							
KUDV25 (ENERGY STAR)	9744483					9744490	9744151						

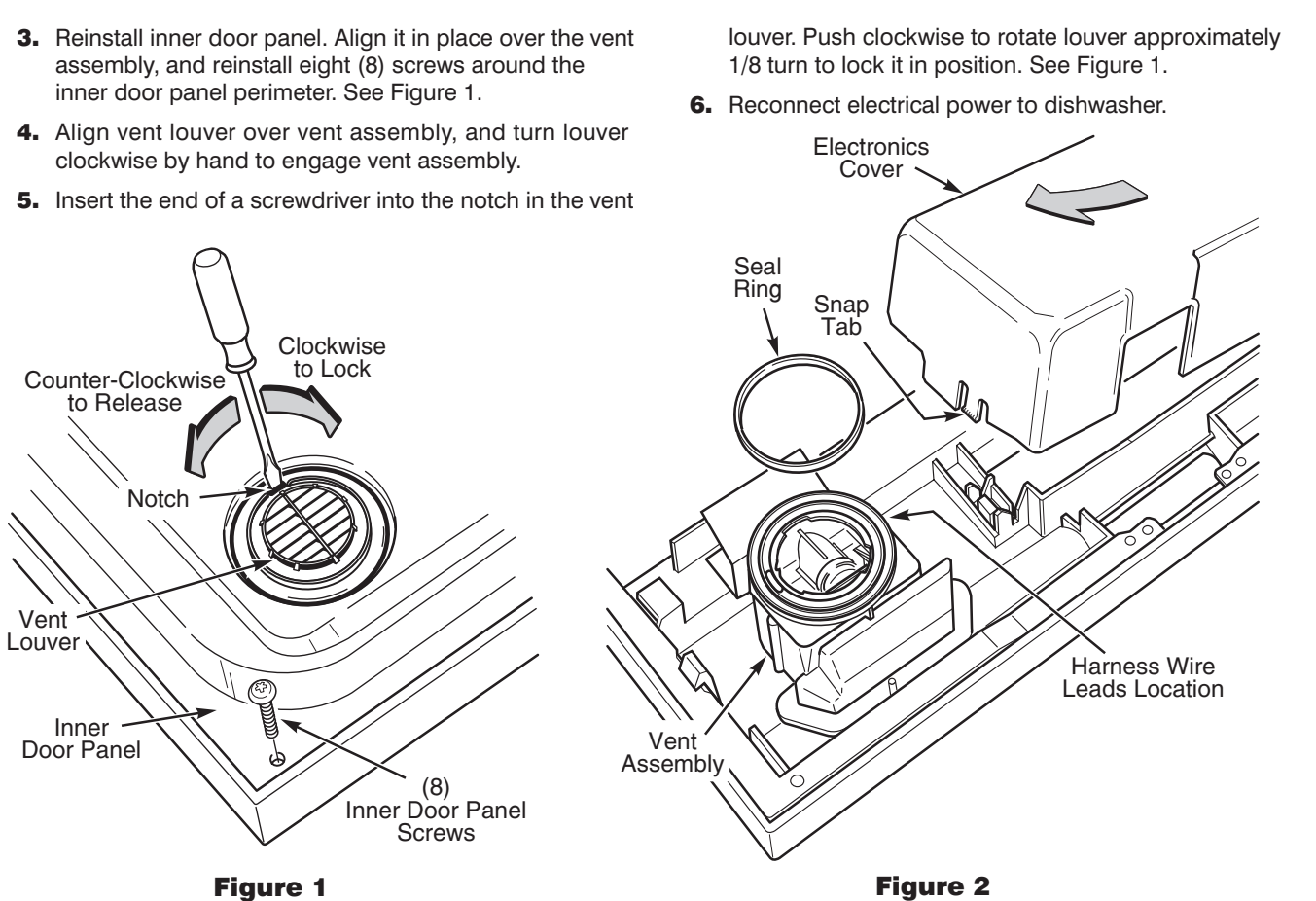
* DENOTES ENERGY EFFICIENT COMPONENTS. DO NOT SUBSTITUTE.

FOR PLASTIC TUB MODELS ONLY:**ARTICULATED VENT ASSEMBLY & ELECTRONICS COVER REMOVAL**

- Disconnect electrical power from dishwasher.
- Refer to Figure 1. Open dishwasher door and insert the end of a screwdriver into the notch in the vent louver. Push counter-clockwise to rotate louver approximately 1/8 turn to release it. Remove louver and set aside for later reinstallation.
- Remove eight (8) screws around perimeter of the inner door panel and remove panel. See Figure 1.
- To remove the vent assembly, refer to Figure 2 and disconnect two (2) electrical harness wire leads from wax motor terminals. Lift out the vent assembly, retaining the seal ring for later reinstallation.
- To access electronic controls, press in on snap tab at end of electronics cover to release, then lift cover up at tab end as you slide cover out. See Figure 2.

ARTICULATED VENT ASSEMBLY & ELECTRONICS COVER REINSTALLATION

- Reinstall electronics cover by sliding it into position above controls and pressing down till snap tab holds it in place. (Figure 2 shows cover removal.)
- Reinstall the vent assembly. Refer to Figure 2 and reconnect two (2) electrical harness wire leads to the wax motor terminals. Place seal ring in seal ring groove of vent assembly, and lower vent assembly into place.

**FOR STAINLESS STEEL TUB MODELS ONLY:****REMOVING THE ARTICULATED VENT ASSEMBLY**

- Disconnect electrical power from dishwasher.
- Open dishwasher door. Remove four (4) screws at the top of stainless steel inner door panel to loosen console. Hold console to prevent strain on wiring.
- Close door and pull top of console away from door. Disconnect ribbon cable and rinse aid sensor connectors from console circuit board.
- Lift console up to disengage bottom tabs from door frame. Set console aside.
- Disconnect electrical connectors from wax motor terminals. Open door and place your hand under the vent assembly to support it when it is released.
- Insert the end of a screwdriver into the notch in the vent louver. Push counter-clockwise to rotate louver approximately 1/8 turn to release it. See Figure 3.
- Retain the vent louver and seal ring for later reinstallation.

REINSTALLING THE ARTICULATED VENT ASSEMBLY

- Place seal ring in seal ring groove of vent assembly.
- Close dishwasher door. Align the plastic post at the top of vent assembly with the notch in door frame.
- Move vent assembly into position so seal ring contacts stainless steel inner door panel.
- Open door and place vent louver over vent assembly, making sure it is seated. Turn louver clockwise by hand to engage vent assembly.
- Insert the end of a screwdriver into the notch in the vent louver. Push clockwise to rotate the louver approximately 1/8 turn to lock it in position. See Figure 3.
- Reinstall console by first engaging bottom tabs into door frame and control mounting bracket, making sure that the latch link is properly inserted into the latch ever as the console is rotated into the proper position. Reconnect ribbon cable and rinse aid sensor connectors to console circuit board.
- Press top of console against door and attach the console by reinstalling the four (4) screws at the top of the stainless steel inner door panel.
- Reconnect electrical power to dishwasher.

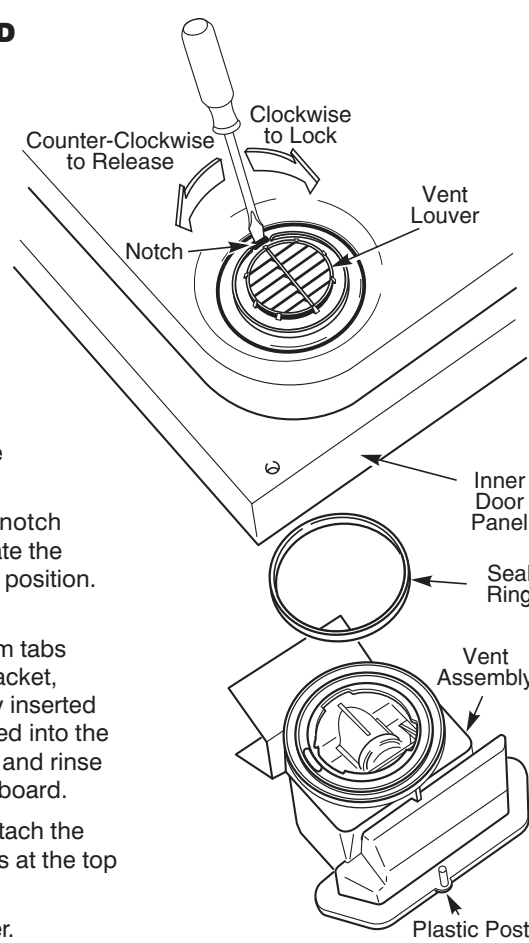


Figure 3

REMOVING THE DETERGENT DISPENSER

- Disconnect electrical power from dishwasher.
- With dishwasher door closed, loosen the two (2) toe panel screws, but do not remove them.
- Remove two (2) screws from top of access panel. Pull top of access panel away from door, lift up and remove. See Figure 4.
- Remove two (2) screws from bottom of outer door panel.
- Refer to detail inset in Figure 4. Slide outer door panel downward until slots in door panel align with slots in door frame, then pull door panel straight off.
- Disconnect electrical connectors from terminals of dispenser solenoid.
- Referring to Figure 5, remove the two (2) metal dispenser retainers: First remove the two (2) outer edge screws from the control mounting bracket and detergent dispenser shield. Next remove the three (3) screws from the bottom retainer, releasing it. Reach under the detergent dispenser shield to remove the remaining screw from the center hole of the upper retainer. Set the retainers aside for later reinstallation.
- With dishwasher door open, reach under and press the tabs at each end of dispenser to release it. Lift dispenser up from inner door panel to remove it.
- Remove blue rinse aid cap to take note of rinse aid dial setting, then replace cap.

INSTALLING THE DETERGENT DISPENSER

- Remove the blue rinse aid knob. Using a coin, turn the dial to setting used previously, then replace knob.
- Snap dispenser into place from inside the dishwasher. Close the door. Referring to Figure 5, replace the metal dispenser retainers. Install one (1) screw each into the center hole of each retainer. Place two (2) screws in the remaining holes of the lower retainer and tighten. Insert the two (2) remaining screws through the upper dispenser retainer and dispenser shield, and tighten. Make sure that the detergent dispenser shield is properly installed and captured by the top dispenser retainer.
- Connect electrical connector to detergent dispenser solenoid, in any order. Connect rinse aid dispenser indicator harness to reed switch, if applicable.
- Refer to detail inset in Figure 4. Align slots in outer door panel with slots in door frame, push door panel in and slide upward. Install two (2) screws at bottom of outer door panel. Be sure that door insulation is installed in unit.
- Slide access panel slots down over toe panel screws. Press top of access panel against dishwasher and tighten two (2) screws at top of panel.
- Tighten toe panel screws.
- Reconnect electrical power to dishwasher.

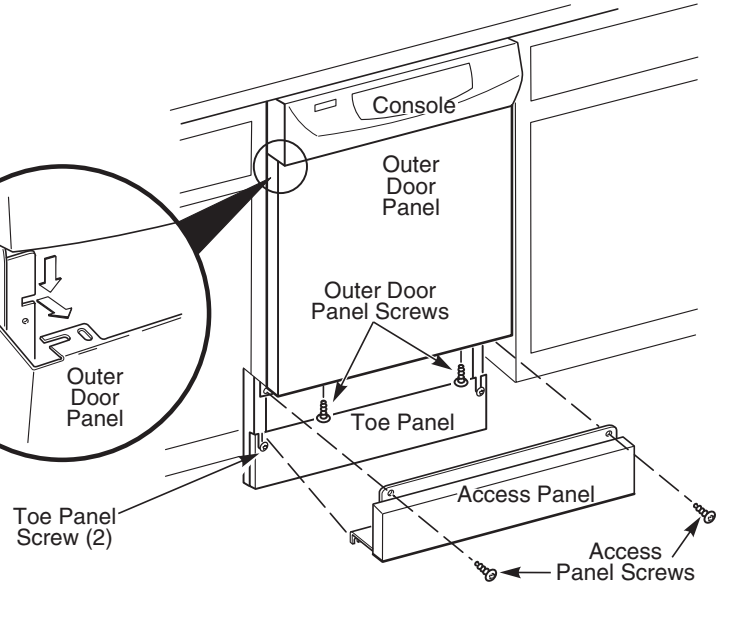


Figure 4

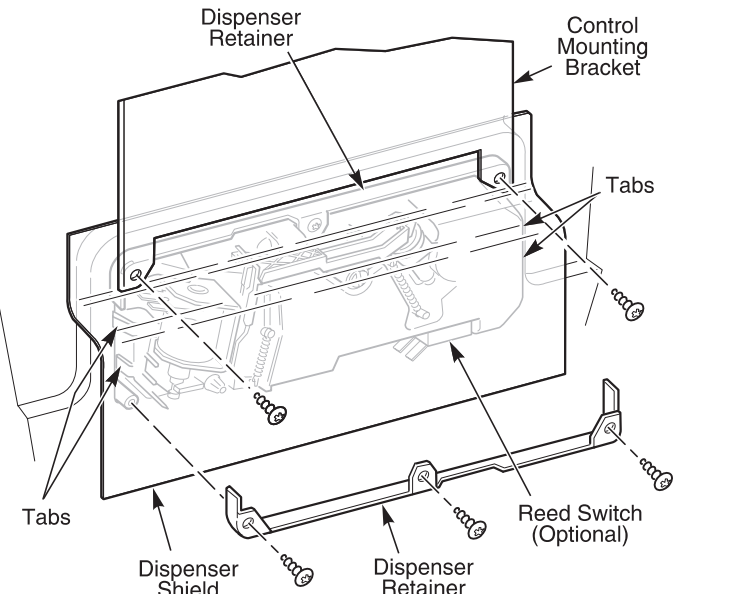


Figure 5

PERIOD 4 (a)						PERIOD 4 (b)						PERIOD 5								PERIOD 6								
RINSE						PURGE						FINAL RINSE								DRY								
25	24	23	22	21		20	19	18	17	16		15	14	13	12	11	10	9	8		7	6	5	4	3	2	1	
0:05	6:00	6:00	6:00	0:05	2:00							2:00	0:05	TH	1:00	1:30	7:30	0:05	2:00		6:00	2:00	6:00	2:00	6:00	2:00	6:00	0
58	58	58	52	46	46							44	42	42	42	41	40	32	32		30	24	22	16	14	8	6	
48	48	48	46	46									0:05	TH	1:00	1:30	7:30	0:05	2:00			6:00	2:00	2:00	6:00	2:00	6:00	